

nfp 25

1" The Plastic Pump

EOM

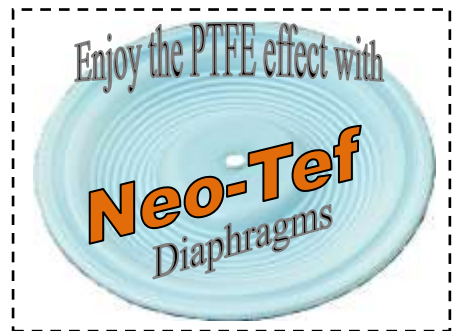
Engineering Operation
& Maintenance

AN **OSCILLATING** TECHNOLOGY
THAT SHRIVELS YOUR COST OF OWNERSHIP



Neo-Flo

AIR DISTRIBUTION SYSTEM



Injection Molded
Polypropelene
Un-Pigmented Virgin Polymer
UV Stabilized Pump Housing
Straight Re-designed liquid path
Bolted Configuration
Ultimate Dimensional Accuracy
PTFE Elastomeric Option
Simplified Assembly
Recyclability & Portability
Weight: 15 Kg. (32 lbs)

Designed for
CORROSIVE
APPLICATION

Designed for
Portability
Weight: 15 Kg. (32 lbs)



neofluxTM

hallmark of EXCELLENCE

Flux the flow

WARNING/CAUTIONS:

Read all these **SAFETY INSTRUCTIONS** BEFORE installing or using this equipment. Keep this manual handy for reference/training.

CONGRATULATIONS...

When you purchased your new *Neoflux* Air-Operated Diaphragm Pump, you bought a dependable and quality-built product. The **nfp** series of Diaphragm Pumps manufactured by *Neoflux*, and the range of options and materials, should satisfy nearly every conceivable industrial pump need.

This owner's manual is intended as a guide for proper installation, operation and maintenance to keep your Diaphragm Pump operating safely and efficiently on the job. Assembly and Disassembly information is also included for your benefit.

Sincerely,

Atit Shah
Director
Neoflux Technic Pvt. Ltd.

Halogenated Solvents Warning:

Halogenated solvents can, under certain circumstances, corrode aluminum or galvanized parts. If the wetted parts or a pressurizable fluid system contain aluminum or galvanized parts, this corrosive action could cause an **EXPLOSION**. Although manufacturers of these solvents typically add inhibitors, there is no known inhibitor that will prevent the corrosive reaction under ALL circumstances.

Special caution should be exercised handling reclaimed or used solvents since the inhibitors are often degraded. ONLY stainless steel or PVDF pumps should be used for these materials. Typical examples of halogenated hydrocarbon solvents (H.H.C.) include, but are not limited to, the following: Trichlorethane, Trichlorethylene, Methylene Chloride, Methyl Chloride, Carbon Tetrachloride, Chloroform and Dichlorethylene.

TABLE OF CONTENTS

• Cautions – READ FIRST!	04
• Neoflux Pump Designation System	05
• The Neoflux Pump	
▪ About AODD Pump	06
▪ Principle Of Operation – How it works	07
▪ Air Distribution System	08
• Dimensional Drawings	09
• Technical Specs & Performance Curve	10
• Installation & Operation	
▪ Installation & Site Selection	11
▪ Submersible Application	12
▪ Viscous Fluid Application / Stroke & Cycle Displacement Graph	13
▪ Pump Handling & Commissioning	16
▪ Operation & Maintenance (<i>Inspection & Noise Hazard</i>)	17
• Troubleshooting	18
• Disassembly / Reassembly Directions	20
• Diaphragm Pump Storage / Spare Parts Storage	27
• Diaphragms & Other Elastomers Storage Recommendation	28
• Exploded View	29
• Parts Listing	30
• Elastomeric Options	31
• Warranty	32
• Neoflux Design Platform	33
• Neoflux Air-Distribution Systems	34
• AODD Pump Selection Guide	35
• Pump Wetted Material Compatibility Chart	36
• General Diaphragm Selection Guide	37
• Service / Maintenance Log	38
• Declaration of Conformity	39
• Contact Neoflux	40



READ FIRST!



Grounding Symbol

Please consider following points during Installation, Inspection, Repairing and Re-Assembling the pump.

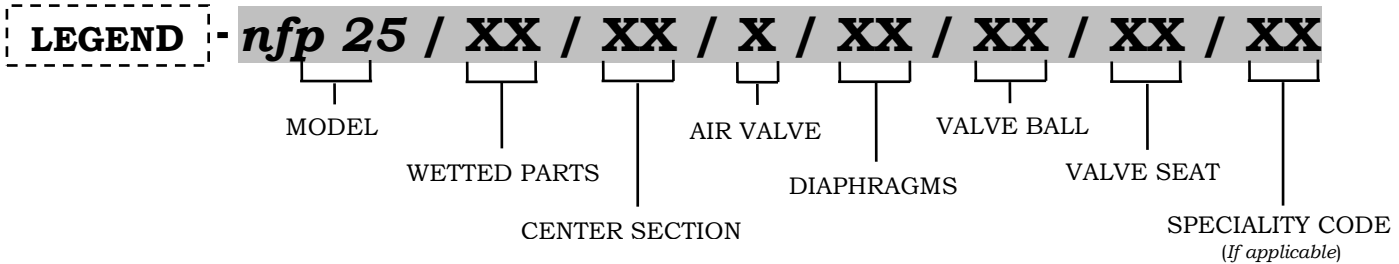
- When choosing pump material, be sure to check the temperature limits (see Page:) for all wetted parts. Maximum temperature limits are based upon mechanical stress only.
- Never alter or modify any part of this equipment; doing so could cause it to malfunction. Use only genuine *Neoflux* Pump parts and accessories.
- Do not apply compressed air to the exhaust port— pump will not function.
- Always wear safety glasses when operating pump. If Diaphragm rupture occurs, material being pumped may be forced out from air-exhaust.
- Do not exceed 8.6 bar (125 psig) air supply on *nfp 25* models.
- Tighten all hardware prior to installation. Fittings may get loose during transportation.
- Pumps should be thoroughly flushed before installing into process lines. FDA approved pumps should be cleaned and/or sanitized before being used.
- Neoflux Plastic Pumps are made with virgin plastic that is not UV stabilized. Direct sunlight for prolonged periods can cause deterioration of plastic.
- Prevention of static spark – If static sparking occurs, fire or explosion could result. Proper grounding of pump, valves & containers is critical when handling flammable fluids or whenever discharge of static electricity is a hazard.
- Before any repair or maintenance is attempted, the compressed air line to the pump should be disconnected & all air pressure allowed to bleed from pump. Disconnect all intake, discharge & air lines. Drain the pump by turning it upside down & allowing any fluid to flow into a suitable container.
- Blow out air line for 10 to 15 seconds before attaching to pump to make sure all pipe line debris / moisture is clear. Use an in-line air filter. A 5 μ (micron) filter is recommended.
- When installing diaphragms, it is important to tighten outer pistons simultaneously (turning in opposite directions) to ensure tight fit.
- Do not lubricate air supply – lubrication will reduce pump performance. All *Neoflux* Air-Distribution Systems are Lube-Free. Pump is already pre-lubed when sent.
- When removing the end-cap using compressed air, the air valve end-cap may come out with considerable force. Hand protection such as a padded glove or rag should be used to capture the end-cap.
- Do not over tighten the air inlet reducer bushing. Additionally, too much torque on the muffler may damage the air valve muffler plate.



NEOFLUX PUMP DESIGNATION SYSTEM

nfp 25 – 1" The Plastic Pump

Maximum Flow Rate: UPTO 210 LPM (55 GPM) (12.6 M³ / Hr.) (Pressure Ratio – 1:1)



Type of Device: Air-Operated Double Diaphragm Pump

Principle: Reciprocating

Your Pump Model – NFP25 / PP / AA / AA / BN / BN / PP / --

Material Codes:

MODEL:

nfp 25 – Neo-Flo

AIR VALVE:

AA = Aluminum
PP = Polypropylene

VALVE BALL:

BN = Buna-N (Red Dot)
EP = EPDM
NE = Neoprene
VT = Viton (Green Dot)
PU – Polyurethane (Clear)
PT – PTFE (White)

WETTED PARTS:

PP = Polypropylene
PV = PVDF

DIAPHRAGMS:

BN = Buna-N (Red Dot)
EP = EPDM (Ethylene Propylene Diene Monomer)
NE = Neoprene
VT = Viton (Green Dot)
PU – Polyurethane (Clear)
PT – PTFE w/Neoprene Back-up

VALVE SEAT:

SS – Stainless Steel
PP - Polypropylene
BN = Buna-N (Red Dot)
NE = Neoprene
VT = Viton (Green Dot)

CENTER SECTION:

AA = Aluminum
PP = Polypropylene

Other Details:

Temperature Limitations: Refer to Page # 30

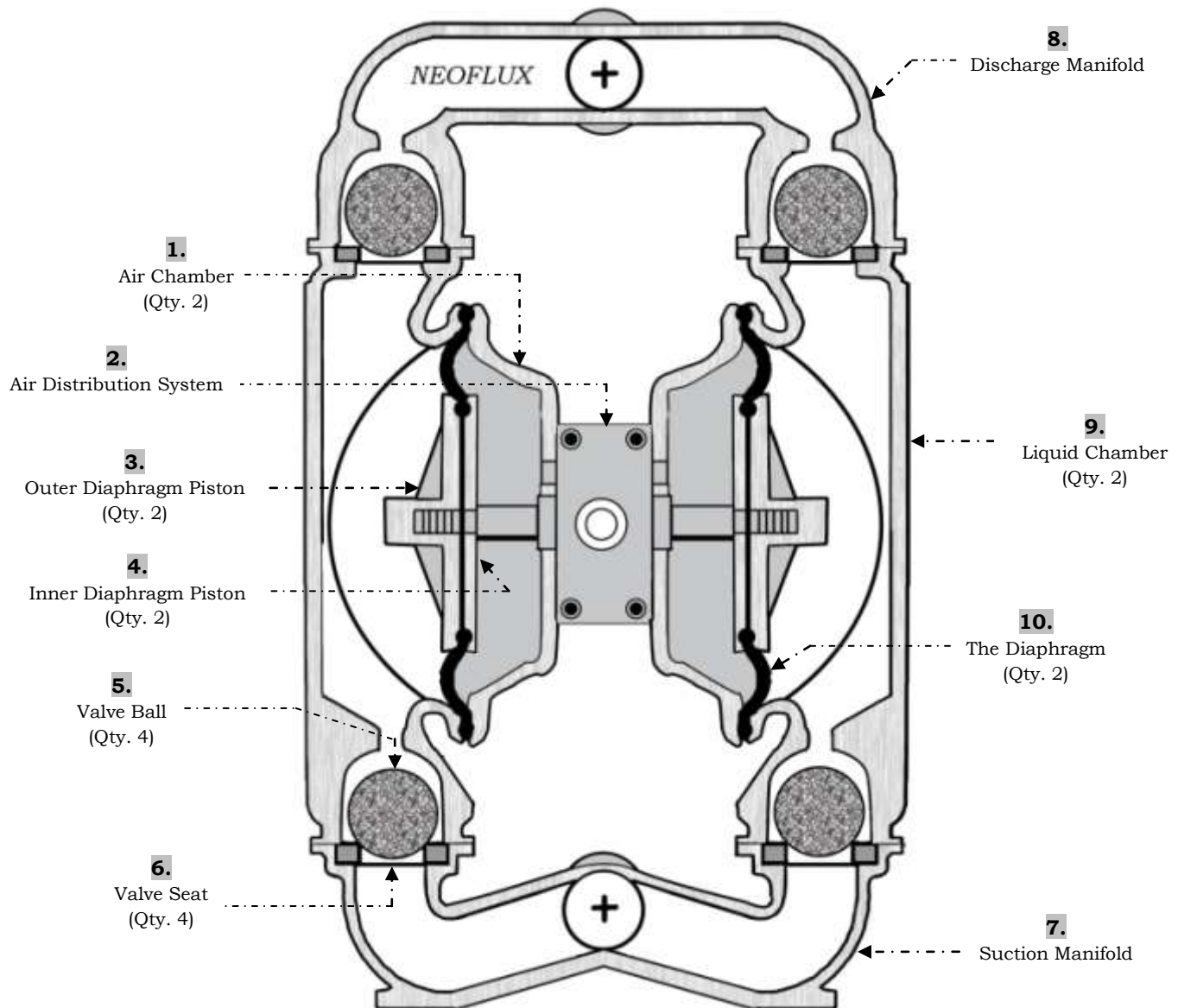
Please refer to Page # 39 of this Engineering, Operation & Maintenance manual (EOM) for information of your specific Pump Model, Serial Number and Manufacturing Date.

Pump Model & Serial Number is also located on your pump's Serial Tag. This Serial Tag is tangled on the Discharge (Top) Manifold of all Neoflux make pumps.

Note: Most elastomeric materials use Colored Dot for identification.

nfp 25 – 1" The Plastic Pump

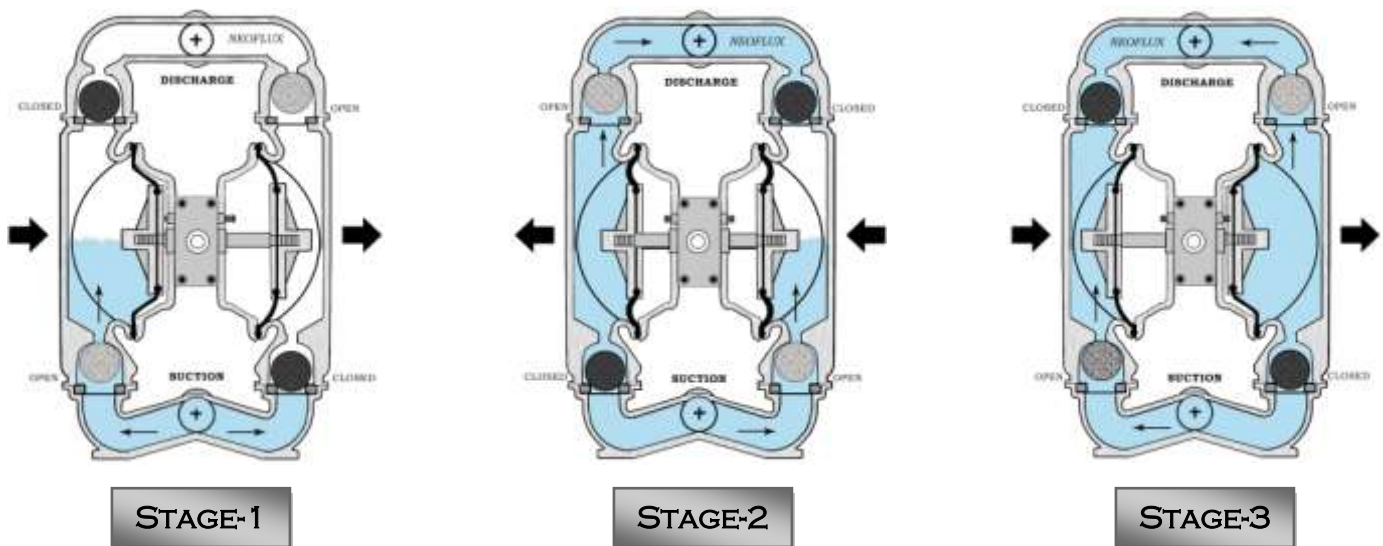
About Air-Operated Double Diaphragm Pump



1. **Air Chamber** – These chambers houses the air which powers the diaphragms.
2. **Air Distribution System** – The Air Distribution System is the most important part of the pump. It has a mechanism that shifts the pump in order to create suction & discharge strokes.
3. **Outer Diaphragm Piston** – These pistons provide a means to connect the diaphragms to the reciprocating common shaft & to seal the liquid side from the air side of the diaphragm.
4. **Inner Diaphragm Piston** – These pistons are located on the air side of the pump and do not come into contact with the process fluid.

5. **Valve Ball** – *Neoflux* air-operated diaphragm pumps use suction & discharge check valves to produce directional flow of process fluid in the liquid chamber. The check valve balls seal & release on the check valve seats allowing for discharge & suction of process fluid to occur.
6. **Valve Seat** - The removable seats provide the ball valves a site to check.
7. **Suction Manifold** – Process fluid enters the pump from the intake port located on the suction manifold at the bottom of the pump.
8. **Discharge Manifold** - Process fluid exits the pump from the discharge port located on the discharge manifold at the top of the pump.
9. **Liquid Chamber** - The liquid chamber is filled with the process fluid during the suction stroke and is emptied during the discharge stroke
10. **The Diaphragm** - The diaphragm membrane provides for separation of the process fluid and the compressed air power source. To perform adequately, diaphragms should be of sufficient thickness and of appropriate material to prevent degradation or permeation in specific process fluid applications. *Neoflux* offers a variety of diaphragm materials for your specific application requirements. Turn to the elastomers section for more details.

Principle of Operation - PUMP



Neoflux Diaphragm pump works with the compressed air coming from compressor. They are common industrial pumps that use positive displacement to move liquids. These devices typically include a Two Diaphragms and Liquid Chambers, as well as suction and discharge check valves to prevent backflow. Pistons are coupled to the diaphragm.

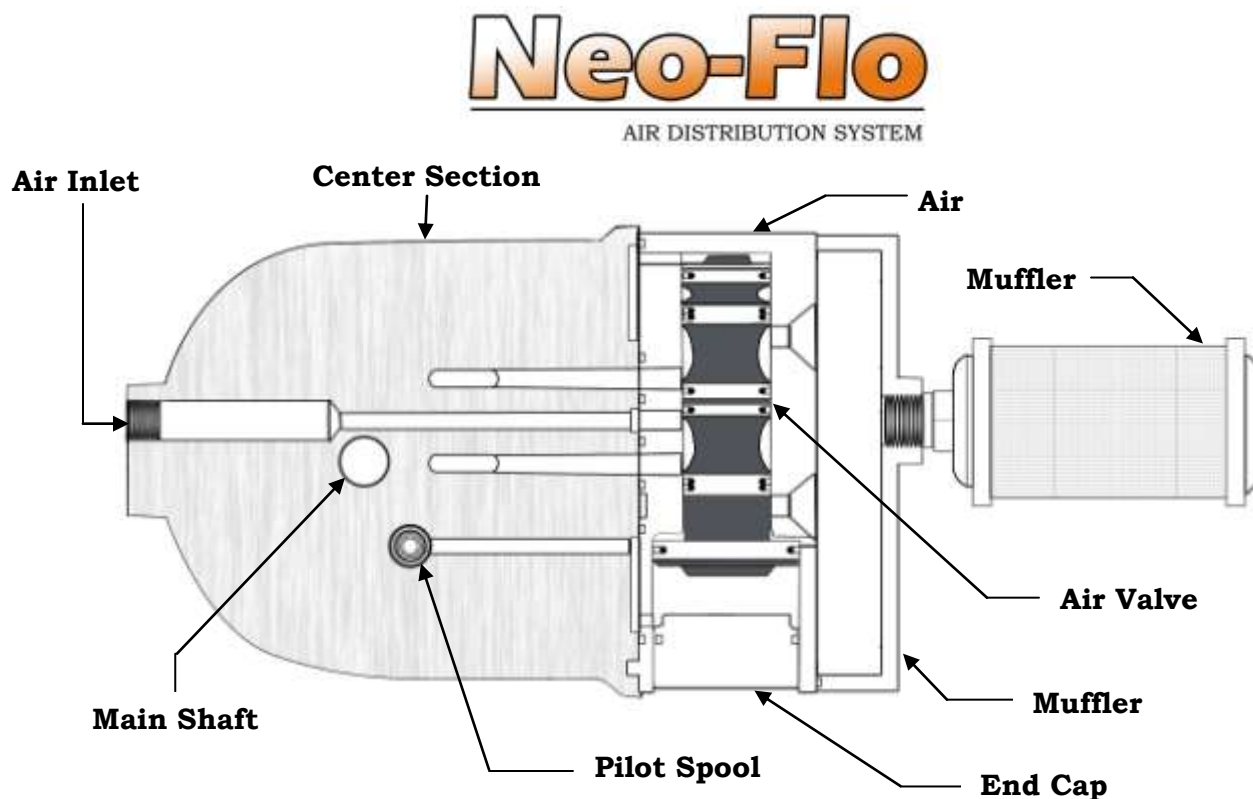
Diaphragm pumps are highly reliable because they do not include internal parts that rub against each other. In fact, prolonged diaphragm life may be possible if the diaphragm pump is run dry to prime. Typically, wear on the diaphragm or flap is due to the corrosive properties of media fluids or gases and/or excessive air supply pressures.

Function of an AODDP:

- This pump uses a very simple valve system to move the DIAPHRAGM SHAFT. The flexible diaphragms are round disks attached at each end of the common shaft.
- The PILOT SPOOL is pushed back and forth whenever the Diaphragm Shaft reaches the end of its throw. The Pilot Spool allows air to move the Air Distribution Valve back and forth.
- The AIR DISTRIBUTION SYSTEM controls air flow to the left or right air chamber, reversing on each stroke. This action causes the other side to draw product into the pump on a suction stroke.
- The four BALL VALVES are free-floating and operated by pressure differences in the pumped liquid. In the pump, liquid flow is from the bottom to the top.
- The pump may take several cycles to completely prime depending on the conditions of the application.

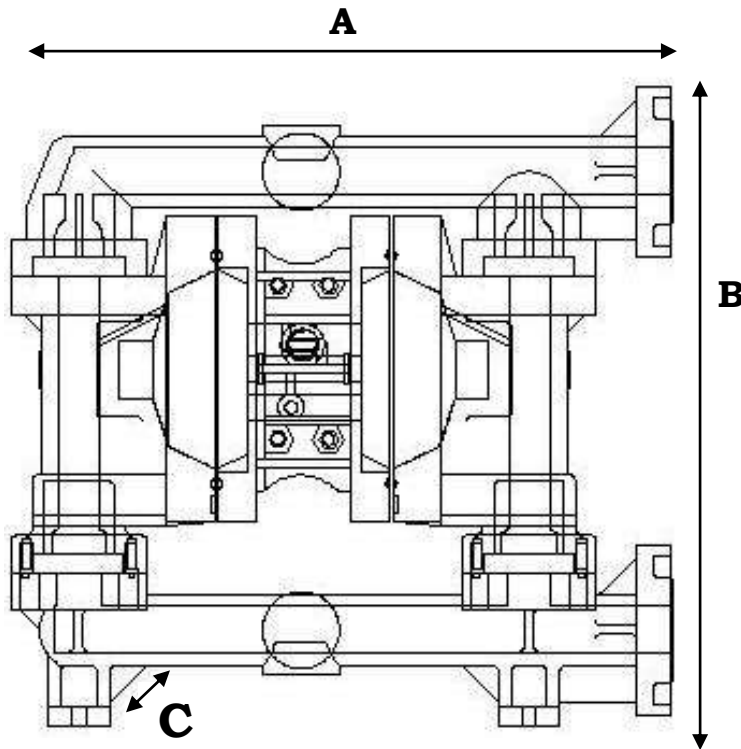
Neo-Flo Principle of Operation – Air Distribution System

The **Neo-Flo** air distribution system incorporates three moving parts: The Air Valve Spool, The Pilot Spool & The Main Shaft. The heart of the system is the air valve spool and air valve. This valve design incorporates an unbalanced spool. The smaller end of the spool is pressurized continuously, while the large end is alternately pressurized then exhausted to move the spool. The spool directs pressurized air to one air chamber while exhausting the other. The air causes the main shaft/diaphragm assembly to shift to one side — discharging liquid on that side and pulling liquid in on the other side. When the shaft reaches the end of its stroke, the inner piston actuates the pilot spool, which pressurizes and exhausts the large end of the air valve spool. The repositioning of the air valve spool routes the air to the other air chamber.



nfp 25 – 1" The Plastic Pump

Dimensional Drawings

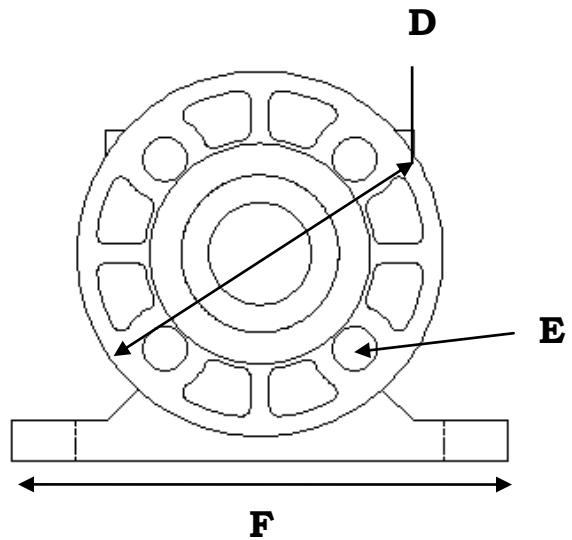


Height 437mm (17.2")
 Width 460mm (18.1")
 Depth 257mm (10.1")

Item	Metric (mm)	Inch
A	460	18.1
B	437	17.2
C (Depth)	230	9.0
D	108	4.3
E	16	0.6
F	165	6.5

Estimated Pump Weight:

Polypropylene..... 15 kg. (32lb.)



nfp 25 – 1" The Plastic Pump

Technical Specifications

FLOW RATE TO 210 LPM (55 GPM) (12.6 M³ / Hr.) (Pressure Ratio – 1 : 1)
AIR SUPPLY PRESSURE = 2 BAR (29.01 PSIG) to 8.6 BAR (124.7 PSIG)

- Port Size – ANSI Flange
 - Liquid Inlet / Suction Side – 1"
 - Liquid Outlet / Discharge Side - 1"
 - Air Inlet – ½" BSP
 - Air Exhaust ½" Female NPT (Includes *Neo-Muff* Silencer)

Note:
 Pump incorporated with **Neo-Tef** PTFE Diaphragms will reduce the Output by 23%
Flow Rate: 161 LPM (42.5 GPM) (9.7 M³/Hr.)

- Suction Lift
 - *Rubber Diaphragm*
 - Dry – 3.4 meter (11.8 ft.)
 - Wet – 9.0 meter (29.5 ft.)
 - *PTFE Diaphragm*
 - Dry – 2.2 meter (7.2 ft.)
 - Wet – 8.8 meter (28.8 ft.)
- Maximum Particle Size / Maximum Compressible Solids Passage – 3/16" (5.1mm)

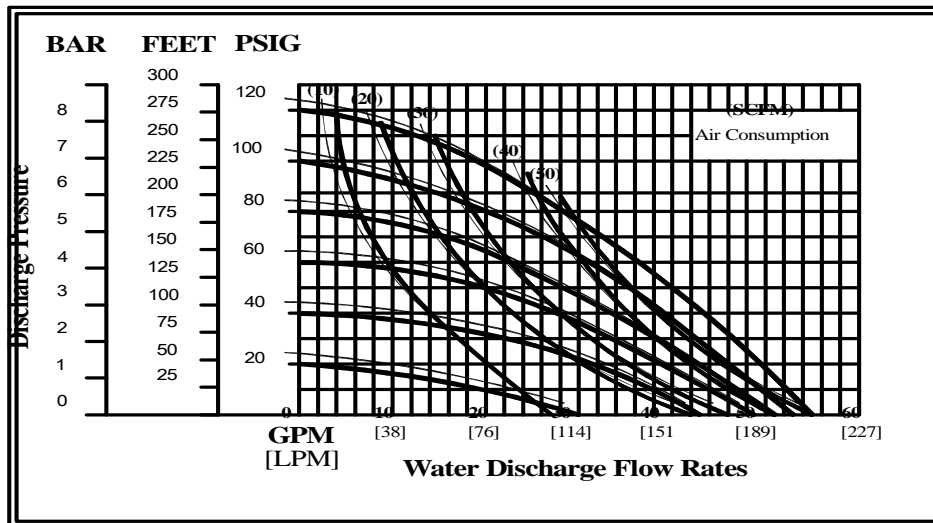
nfp25 – 1" The Plastic Pump (Max. Cycles & Strokes Table)				
DIAPHRAGMS	Max. Displacement / Stroke	Max. Displacement / Cycle	Max. Strokes / Minute	Max. Cycles / Minute
<i>Rubber Fitted</i>	0.30 Liter (0.08 Gallon)	0.6 Liter (0.16 Gallon)	700	350
<i>PTFE Fitted</i>	0.23 Liter (0.06 Gallon)	0.46 Liter (0.12 Gallon)	700	350

nfp25 – 1" The Plastic Pump (Recommended Cycles & Strokes Table)		
DIAPHRAGMS	Recommended Strokes / Minute	Recommended Cycles / Minute
<i>Rubber Fitted</i>	420	210
<i>PTFE Fitted</i>	420	210

- Est. Ship Weight:
 - Polypropylene 15 kg. (32 lb.)
 - Typical Noise Level - 65dB (with *Neo-Muff* Silencer)
- Pump Dimensions - Height 437mm (17.2") X Width 460mm (18.1") X Depth 230mm (9.0")

* Displacement per stroke was calculated at 4.9 bar (71 psig) air inlet pressure against a 2.2 bar (31 psig) head pressure.

nfp 25 Performance Chart



Flow indicates in chart are determined by pumping water. Based on Specific Gravity of 1.0
 For optimum life and performance, pumps should be specified so that daily operation parameters will fall in the center of the pump performance curve.

nfp 25 – 1" The Plastic Pump

Suggested Installation / Site Selection

Neoflux nfp 25 Model has a 1" inlet & Outlet & is designed for flows to 210 lpm (55 gpm). All *nfp* series plastic pumps are manufactured with wetted parts of pure un-pigmented polypropylene. Center Section is manufactured with Aluminum or Glass Fiber Filled Polypropylene (GFFPP). For requirement of metal pumps, please see *nf* series.

The suction pipe size should be at least the equivalent or larger than the diameter size of the suction inlet if highly viscous material is being pumped. The suction hose must be non-collapsible, reinforced type as the *nfp 25* model is capable of pulling a high vacuum. Discharge piping should be at least 1" larger diameter can be used to reduce friction losses. It is critical that all fittings & connections are airtight or a reduction or loss of pump suction capability will result.

Location: Noise, Safety & other logistical factors usually dictate where equipment should be situated on the production floor. Within the framework of these & other existing conditions, every pump should be located in such a way that all the below key factors are balanced against each other to maximum advantage.

Access: First, the location should be accessible. If it is easy to reach the pump, maintenance personnel will have an easier time carrying out routine inspections & adjustments. Should major repairs become necessary, ease of access can play a key role in speeding the repair process and reducing total downtime.

Solenoid Operation: When operation is controlled by a solenoid valve in the air line, three-way valve should be used, thus allowing trapped to bleed off and improving pump performance. Pumping volume can be set by counting the number of strokes per minute and multiplying by displacement per stroke.

Sound: Sound levels are reduced by using the specially designed *Neo-Muff* element. Other

Air Supply: Each Pump location should have an air line large enough to supply the volume of air necessary to achieve the desired pumping rate. Do not exceed air supply of 8.6 bar (125 psig) depending on the pumping requirement. Remember, more the pressure, more the wear & tear of pump parts and diaphragms. Ideal air pressure should be 4 to 5 bar.

For best results, pumps should use a 5µ (Microns) air filter, needle valve and regulator. The use of an air filter before the pump will insure that the majority of any pipeline contaminants/moisture will be eliminated.

mufflers can be used, but usually reduce pump performance.

Elevation: Selecting a site that is well within the pump's dynamic lift capability will ensure that loss-of-prime troubles will be eliminated. In addition, pump efficiency can be adversely affected if proper attention is not given to site location.

Piping: Final determination of the pump site should not be made until the piping problems of each possible location have been evaluated. The impact of current and future installation should be considered ahead of time to make sure that inadvertent restrictions are not created for any remaining sites.

The best choice possible will be a site involving the shortest and straight hook-up of suction & discharge piping. Unnecessary elbows, bends & fittings should be avoided. Pipe size should be selected to keep friction losses within practical limits. All piping should be supported independently of the pump. In addition, the piping

should be aligned to avoid placing stress on the pump fittings.

Flexible Hose can be installed to aid in absorbing the forces created by the natural reciprocating action of the pump. If the pump is to be bolted down to a solid location, a mounting pad placed between the pump and the foundation will assist in minimizing pump vibration. Flexible connections between pump and rigid piping will also assist in minimizing pump vibration. If quick-closing valves are installed at any point in the discharge system, or if pulsation within a system becomes a problem, a surge suppressor should be installed to protect the pump, piping and gauges from surges and water hammer.



Submersible Application:

Neoflux AODD models can be installed in submersible applications only when both the wetted and non-wetted portions are compatible with the material being pumped. If the pump is to be used in a submersible application, a hose should be attached to the air & pilot spool exhaust ports of the pump. These should then be piped above the liquid level. The exhaust area of the pilot spool is designed to be tapped for a 1/8" BSP fitting.

When the pumps are installed in the applications involving flooded suction or suction head pressures, a gate valve should be installed in the suction line to permit closing of the line for pump service.

If the pump is to be used in a self-priming application, be sure that all connections are alright and that the suction-lift is within the ability of the model.

Pumps in service with a positive suction head are most efficient when inlet pressure is limited to 0.5 to 0.7 bar (7-10 psig). Premature diaphragm failure may occur if positive suction is 0.7 Bar (10 psig) and higher.

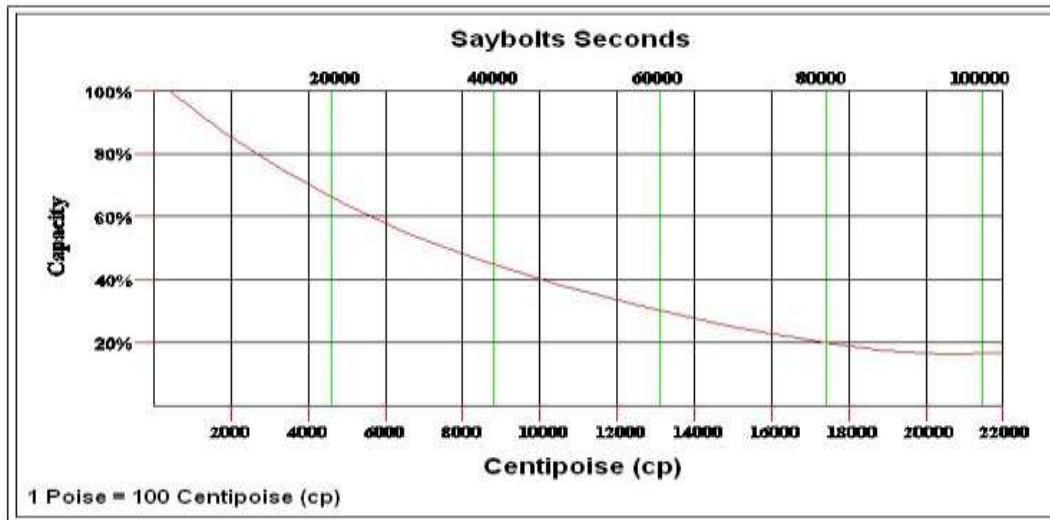
The *Neoflux nfp 25* will pass 5.1mm of compressible solids. Whenever the possibility exists that larger solid objects may be sucked into the pump, a strainer should be used on the suction line.

Caution: *Neo-Sync* design pumps are not submersible.

Viscous Fluid Application:

Viscosity **versus** Pump efficiency Chart

AODD Pump Viscosity Chart

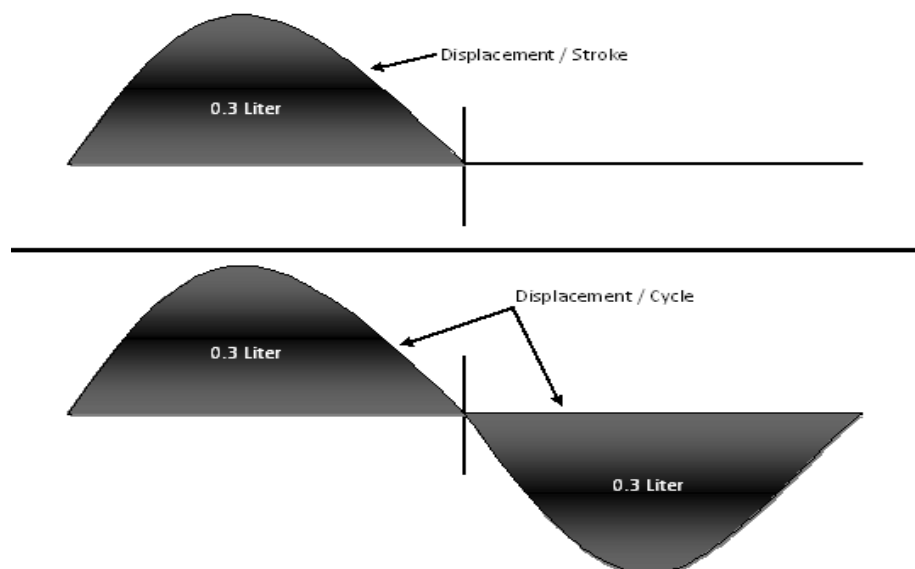


As you can see from the graph above, as viscosities of the fluid increases, the discharge capacity of the pump decreases.

Points to remember when pumping high viscous fluids:

1. Position the pump close to or below the level of the fluid source.
2. Suction lines should be increased in size – up to 3 times the size of the pump manifold inlet. Dual manifolds may be used when available.
3. Start the pump slowly using a control valve on the air line.
4. If greater capacity is required, select a larger pump.

nfp 25 Stroke & Displacement Graph (Neo-Flex Rubber Diaphragm)



nfp 25 – 1" The Plastic Pump

Suction & Discharge Piping:

Suction & Discharge Piping should be fully supported & anchored near to but independent of the pump. The piping to the pump should be a hose, to prevent undue stress & strain on the pump connections & piping.

Connection of Suction Pipe / Hose:

RECOMMENDED PIPING CONNECTIONS:		
Pump Size	Recommended Air Line Size	Recommended Suction / Discharge Size
1"	$\frac{3}{8}$ "	1½"
2"	$\frac{1}{2}$ "	2½"
3"	$\frac{3}{4}$ "	3½"

Remember that the suction pipe / connection are the most critical point, especially if the pump is priming. Just a small leakage will dramatically reduce suction capability of the pump. When connection the suction hose, following is recommended:

- For satisfactory operation, use reinforced hose (the suction power may otherwise shrink the hose) or other flexible piping. The internal diameter of the hose should be the same as on the suction connection (at the bottom of the pump) to have best suction capability.
- Upgrading the hose to one size higher will not only improve the Pump Output & Suction Capability but also reduce the Pulsation.
- Make sure that the connection hose – pump is completely tight; otherwise the suction capability will be reduce.
- Always use a short suction pipe as possible. Avoid air pockets which can arise with long piping.

Connection of Discharge Pipe / Hose:

- For this connection it is only recommended a simple positive flow connection. Use a hose or a flexible piping (minimum one meter) between the discharge connection and any rigid fixed piping. All components (hose, pipe, valves etc.) on the discharge piping must be designed for minimum PN 10.

Air Connection:

Screw the air hose into the air intake on the center section of the pump with for example a bayonet coupling. For best efficiency, use the same hose diameter as the internal diameter of the connection on the air intake.

Air Treatment System:

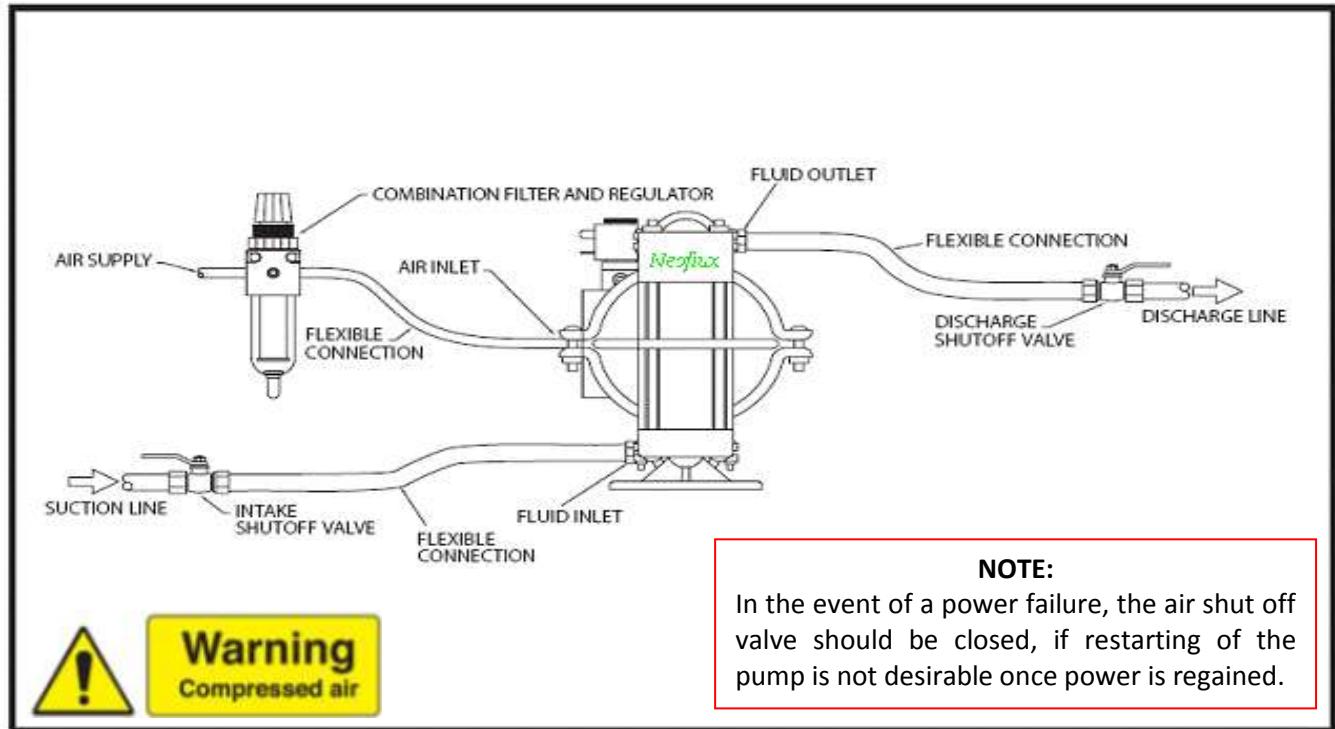
The *Neo-Flo* Air Valve has self-lubricating technology & is designed for oil free air. Lubrication of the air is **NOT ALLOWED**. However, if the air is very dry (laboratory air), the air may be lubricated with water. Maximum air pressure is 8.6 bar. As prevention purpose, a filtration of air by means of a 5µ filter or finer is recommended. Dirt in the air can under unfortunate circumstances be the cause of breakdown.

To facilitate the operation of the pump, we recommend an air treatment system connected to air supply. These components should be included:

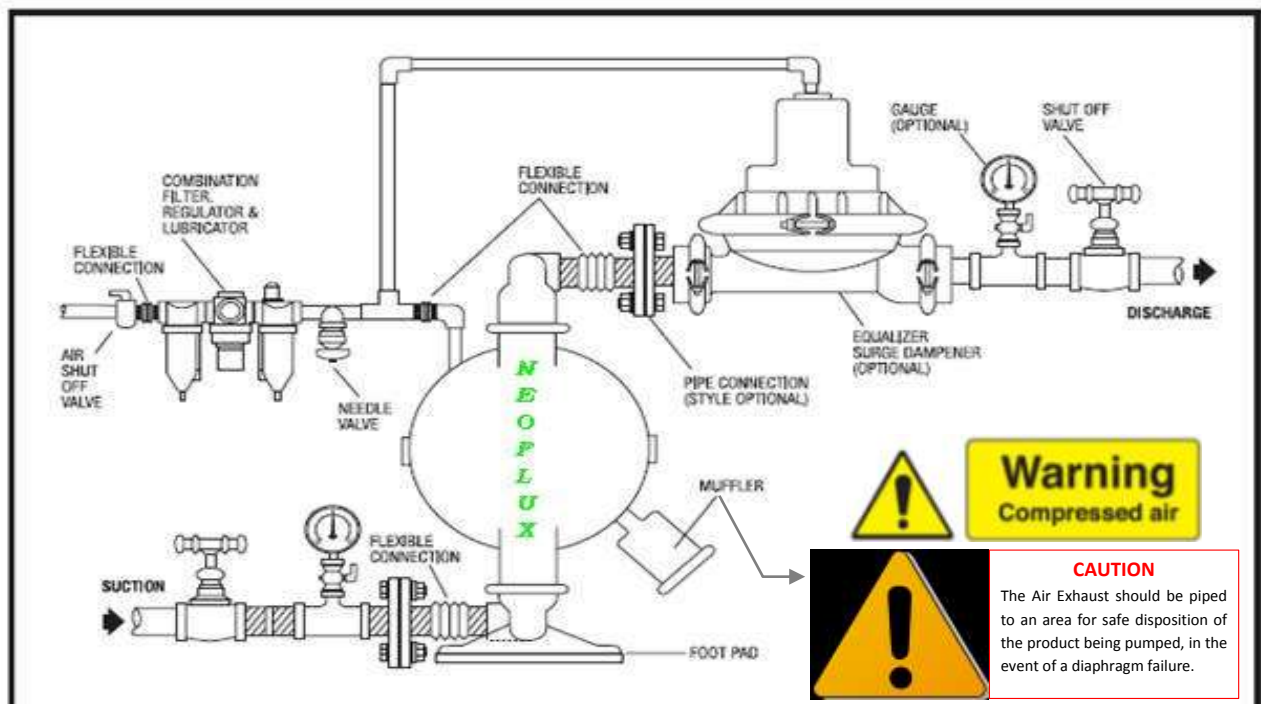
1. 5µ Air Filter & Regulator Combo (FR) to filter & fine-tune the air pressure
2. Manometer to read the actual pressure
3. Needle valve to adjust air flow

These components are included in *Neoflux* Air Treatment System which can be ordered from us.

Plumbing Connections



Typical Suggested Installation



nfp 25 – 1" The Plastic Pump

Pump Handling & Commissioning

Handle the pump from manifolds to move. *nfp25* model pumps are portable & light in weight (Only 15 Kg.) and can be handled by only one person. Hoisting the pump using chain or other solid equipment might damage the Pump Housing.

The support of the pump is furnished with mounting holes. Fix the pump on a stable foundation, which is able to absorb vibrations. It is essential for the operation of the pump to mount the pump with the feet in a downward direction. (See Diagram on Page: 15)

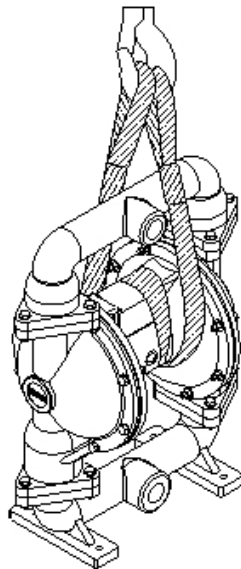


Figure: Moving the pump with crane

Install the pump to desired place in vertical position.

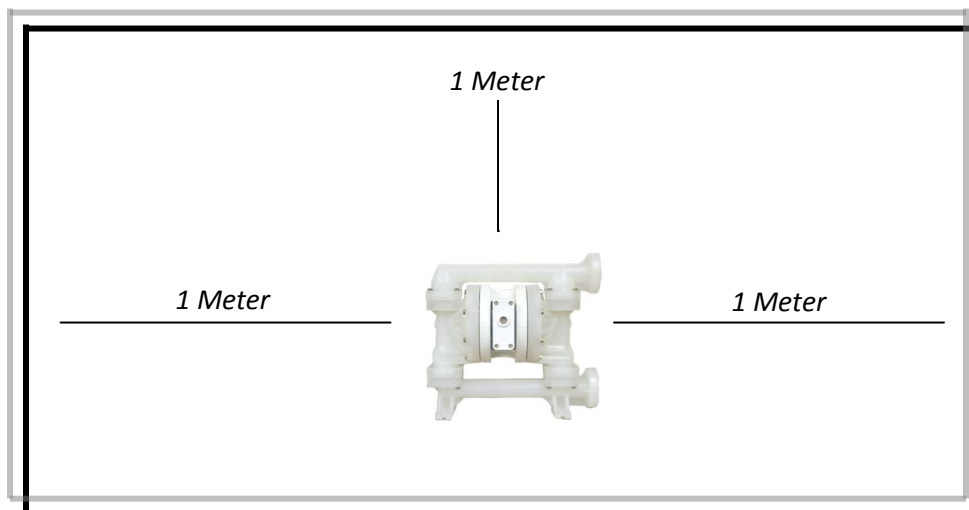


Figure: Minimum space requirement around the diaphragm pump

nfp 25 – 1" The Plastic Pump

WARNING!!



If the pump works in fullest capacity continuously, the diaphragms & valves wear & tear will increase. To avoid that, pump must be chosen with one step higher capacity so that the performance of the pump falls under center of the curve.

Suggested Operation & Maintenance

Neoflux AODD pumps are pre-lubricated & do not require in-line lubrication. If pump is heavily lubricated by an external source, the pump's internal lubrication may be washed away. If pump is then moved to non-lubricating location, it may need to be disassembled & re-lubricated. Pump discharge rate can be controlled by limiting the volume and/or pressure of the air supply to the pump (preferred method). An air regulator is used to regulate air pressure. A needle valve is used to regulate volume. Pump discharge rate can also be controlled by throttling the pump discharge by partially closing a valve in the discharge line of the pump. This action increases friction loss, which reduces flow rate. This is useful when the need exists to control the pump from a remote location. When the pump discharge pressure equals or exceeds the air supply pressure, the pump will stop; no bypass or pressure relief valve is needed, and pump damage will not occur. The pump has been "deadheaded". It can be restarted by reducing the fluid discharge pressure, or increasing the air inlet pressure. *Neoflux* pumps solely run on compressed air and does not generate heat, therefore your process fluid temperature will not be affected.

Maintenance & Inspection:



Since each application is unique, maintenance schedules may be different for every pump. Frequency of use, line pressure, viscosity & abrasiveness of process fluid all affect the parts life of *Neoflux* Pump. Periodic inspections have been found to offer the best means for preventing unscheduled pump downtime. Personnel familiar with the pump's construction and service should be informed of any abnormalities that are detected during operation.

Hazards Generated By Noise:



Pump noise can be excessive under certain operating conditions, e.g. High air pressure supply & little or no discharge head. Extended periods of operation under such conditions can create a hazard to operators working in proximity to the pumps. Ways to avoid this hazard are listed as follows:

- Use proper hearing protection devices.
- Use *Neo-Muff* Silencers on the pump's air exhaust. It will reduce the noise level to as low as 66dB.
- Plumb the pump's exhaust air to an area not in proximity of plant workers.
- Use elastomeric Valve Balls in lieu of PTFE Valve Balls since soft balls reduce noise. (Ensure proper chemical resistance of ball elastomers used)

nfp 25 – 1" The Plastic Pump

Troubleshooting FAQ's

❖ **Pump will not run or run slowly.**

- ✓ Ensure that the air inlet pressure is at least 0.35 bar (5 psig) above startup pressure and that the differential pressure (the difference between air inlet and liquid discharge pressures) is not less than 0.7 bar (10 psig).
- ✓ Check air inlet filter for debris.
- ✓ Check for extreme air leakage which would indicate worn seals/bores in the air valve, pilot spool, and main shaft. Also check for air leakage from End-Cap on bottom of Air Valve Assembly.
- ✓ Disassemble pump and check for obstructions in the air passageway or objects which would obstruct the movement of internal parts.
- ✓ Check for sticking ball check valves. If material being pumped is not compatible with pump elastomers, swelling may occur. Replace ball check valve and seals with proper elastomers. In addition, valve balls become smaller as the wear. This may cause them to become stuck in the seats. In this case, replace balls and seats.
- ✓ Check for broken inner piston, which will prevent the air valve spool from shifting.
- ✓ Remove plug from pilot spool exhaust, check pilot spool exhaust for blockage.

❖ **Pump runs but little or no product flows.**

- ✓ Check for pump cavitations; slow pump speed down to allow thick material to flow into liquid chambers.
- ✓ Verify that vacuum required to lift liquid is not greater than the vapor pressure of the material being pumped (Cavitation).
- ✓ For Suction lifts exceeding 15 feet, fill the suction pipe with liquid prior to priming.
- ✓ Check for sticking ball check valves. If material being pumped is not compatible with pump elastomers, swelling may occur. Replace ball check valve and seals with proper elastomers. In addition, valve balls become smaller as the wear. This may occur them to become stuck in seats. In this case replace balls & seats.

❖ **Pump Air Valve freezes.**

- ✓ Check for excessive moisture in compressed air. Install either a dryer, or hot air generator for compressed air. Alternatively, a coalescing filter may be used to remove the water from the compressed air in some application.

❖ **Air Bubble in pump discharge.**

- ✓ Check for ruptured diaphragm.
- ✓ Check tightness outer pistons.
- ✓ Check torque of bolts and integrity of O-rings and seals, especially at intake manifold.

❖ **Product comes out of Air Exhaust.**

- ✓ Check for diaphragm rupture.
- ✓ Check tightness of outer piston to shaft.

nfp 25 – 1" The Plastic Pump

Disassembly / Reassembly Directions



READ FIRST!



Before any maintenance or repair is attempted, the compressed air line to the pump should be disconnected and all air pressure should be allowed to bleed from the pump. Disconnect all intake, discharge, and air lines. Drain the pump by turning it upside down and allowing any fluid to flow into a suitable container. Be aware of any hazardous effects of contact with your process fluid.

NOTE: The model photographed for these instructions incorporates rubber diaphragms, balls, and seats. Models with *PTFE* diaphragms, balls and seats are the same except where noted.

Pump Disassembly Directions



Tools Required:

M8 Size Allen Key

Two Adjustable Wrenches

Vise equipped with soft jaws (such as plywood or plastic)



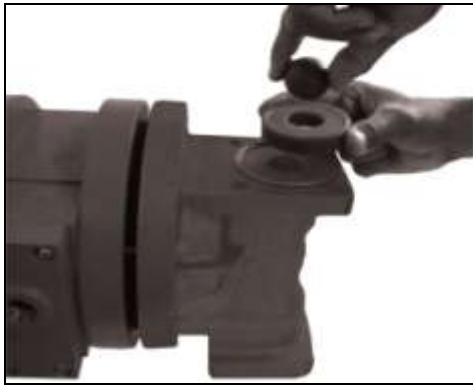
Step 1:

Please note alignment marks on center section. Use to properly align liquid chamber to center section



Step 2:

Using a M8 Allen Key wrench, loosen the discharge manifold from the liquid chambers.



Step 3:

Remove the discharge manifold to expose the valve balls, valve seats and valve seat o-rings.



Step 6:

Remove the discharge valve balls, seats and valve seat o-rings from the discharge manifold and liquid chamber, inspect for nicks, gouges, chemical attack or abrasive wear.



Step 4:

Remove the discharge valve balls, seats and valve seat o-rings from the discharge manifold and liquid chamber, inspect for nicks, gouges, chemical attack or abrasive wear. *Note:* Replace worn parts with genuine *Neoflux* part for reliable performance.



Step 7:

Using a M8 Allen Key wrench, remove the liquid chambers from the center section.



Step 5:

Using a M8 Allen Key wrench, loosen the inlet manifold from the liquid chambers.



Step 8:

The liquid chamber should be removed to expose the diaphragm and outer piston. Rotate center section and remove the opposite liquid chamber.



Step 9:

Using two adjustable wrenches or 25 mm (1") sockets, remove diaphragm assembly from center section assembly.



Step 11:

To remove the remaining diaphragm assembly from the shaft, secure shaft with soft jaws (a vise fitted with plywood or other suitable material) to ensure shaft is not nicked, scratched, or gouged. Using an adjustable wrench, remove diaphragm assembly from shaft. Inspect all parts for wear and replace with genuine *Neoflux* parts if necessary.



Step 10:

After loosening and removing the outer piston the diaphragm assembly can be disassembled.



Step 12:

Inspect diaphragms, outer and inner pistons for signs of wear. Replace with genuine *Neoflux* parts if necessary.

Neo-Flo Air Valve / Center Section Disassembly Directions

Tools Required:

M6 Size Allen Key
Cerclip Pliers
O-ring Pick



Step 1:

Using a M6 size Allen Key, loosen the Air Valve bolts.



Step 3:

Lift away air valve assembly and remove air valve gasket for inspection. Replace if needed.



Step 2:

Remove muffer plate and air valve bolts from air valve assembly exposing muffer gasket for inspection. Replace if necessary.



Step 4:

Remove air valve end cap to expose air valve spool by simply lifting up on end cap once air valve bolts are removed.



Step 5:

Remove the air valve spool from the air valve body by threading one air valve bolt into the end of the air valve spool and gently sliding the spool out of the air valve body. Inspect seals for signs of wear and replace entire assembly if necessary. Use caution when handling air valve spool to prevent damaging seals. *Note:* Seals should not be removed from assembly. Seals are not sold separately.



Step 6:

Remove pilot sleeve retaining snap ring on both sides of center section with snap ring pliers.



Step 7:

Remove pilot spool assembly from the center section.



Step 8:

Gently remove the O-ring from the opposite side of the “notched end” on the spool. Gently remove the pilot spool from sleeve & inspect from nicks & wear. Replace the pilot sleeve assembly or outer sleeve O-rings if necessary. During re-assembly, never insert the pilot spool with “notched end” first. Doing this may cut or damage the urethane O-ring as it slides over the holes of the sleeve.

NOTE: Seals should not be removed from pilot spool. Seals are not sold separately.



Step 9:

Check center section shaft guide rings for sign of wear. Replace both the rings if necessary.

Grounding Strap for Flammable Fluid Transfer

Flammable Fluid Transfer pumps must be electrically grounded using the grounding strap provided. Improper grounding can cause improper and dangerous operation. To properly attach the grounding strap to *nfp 25* pump, first position the grounding strap eyelet over the one longer manifold bolt on the inlet manifold. Then secure it using nut included. This is done to avoid loosening any of the wetted path components and possibly creating a leak. Grounding the pump must be done in accordance with local codes, or in the absence of local codes, an industry or nationally recognized code having jurisdiction over the specified installation.

Reassembly Directions



Grounding Symbol

GENERAL RE-ASSEMBLY TIPS:

Upon performing applicable maintenance to the air distribution system, the pump can now be reassembled. The air distribution system needs to be assembled first, then the diaphragms and finally the wetted path. The following tips will assist in the assembly process.

- ❖ Lubricate air valve bore, center section shaft and pilot spool bore with grease that has no water washout capability & excellent oscillation property.
- ❖ Clean the inside of the center section shaft bore to ensure no damage is done to new shaft seals.
- ❖ A small amount bearing grease can be applied to the muffler and air valve gaskets to locate gaskets during assembly.
- ❖ Make sure that the exhaust port on the muffler plate is centered between the two exhaust ports on the center section.
- ❖ Stainless bolts should be lubed to reduce the possibility of seizing during tightening.

AIR VALVE BODY INSTALLATION:

Note: Air Valve Piston Seals should not be removed. Seals are not sold separately.

- ❖ Slowly insert the air valve piston into the lubricated air valve bore with a rotating motion to avoid the damage of piston seal.
- ❖ Insert air valve end-cap on bottom of the Air valve body.
- ❖ Install air valve gasket and muffler plate gasket.
- ❖ Attach the Muffler plate with the muffler plate gasket in correct direction.
- ❖ Using hex head wrench, tighten the air assembly with the center section.

PILOT SPOOL INSTALLATION:

Note: Pilot Spool Seals should not be removed. Seals are not sold separately.

- ❖ Lubricate pilot spool bore as well as pilot spool sleeve with bearing grease that has no water washout capability & excellent oscillation property to avoid damage to pilot spool O-Rings while sliding in.
- ❖ Using an O-ring pick, gently remove the O-ring from the opposite side of the “notched end” on one side of the pilot spool for insertion. During re-assembly of pilot spool, never insert the pilot spool into the sleeve with the “notched end” first, this end incorporates the urethane o-ring and will be damaged as it slides over the ports cut in the sleeve.
- ❖ Gently insert pilot spool Assembly into center section Pilot Sleeve Bore.
- ❖ Insert the Cerclip into the grooves on both ends of center section with internal / external Cerclip pliers.

SHAFT SEAL INSTALLATION:

PRE-INSTALLATION

- ❖ Once all of the old seals have been removed, the inside of the bushing should be cleaned to ensure no debris is left that may cause premature damage to the new seals.

INSTALLATION

The following tools can be used to aid in the installation of the new seals:

- Needle Nose Pliers
- Phillips Screwdriver
- Electrical Tape



- ❖ Wrap electrical tape around each leg of the needle nose pliers (heat shrink tubing may also be used). This is done to prevent damaging the inside surface of the new seal.
- ❖ With a new seal in hand, place the two legs of the needle nose pliers inside the seal ring.
- ❖ Open the pliers as wide as the seal diameter will allow, then with two fingers pull down on the top portion of the seal to form kidney bean shape.
- ❖ Lightly clamp the pliers together to hold the seal into the kidney shape. Be sure to pull the seal into as tight of a kidney shape as possible, this will allow the seal to travel down the bushing bore easier.
- ❖ With the seal clamped in the pliers, insert the seal into the bushing bore and position the bottom of the seal into the correct groove. Once the bottom of the seal is seated in the groove, release the clamp pressure on the pliers. This will allow the seal to partially snap back to its original shape.
- ❖ After the pliers are removed, you will notice a slight bump in the seal shape. Before the seal can be properly resized, the bump in the seal should be removed as much as possible. This can be done with either the Phillips screwdriver or your finger. With either the side of the screwdriver or your finger, apply light pressure to the peak of the bump. This pressure will cause the bump to be almost completely eliminated.
- ❖ Lubricate the edge of the shaft with Grade 2 EP bearing grease.
- ❖ Slowly insert the center shaft with a rotating motion. This will complete the resizing of the seal.
- ❖ Perform these steps for the remaining seal.

nfp 25 – 1" The Plastic Pump

Pump Storage

If the equipment is to be stored prior to installation, place it in a clean location. Do not remove the protective covers from the suction, discharge & air connections which have been fastened to keep pump internals free of debris. Clean the pump thoroughly before installation.

- If you are not going to use the pump for a long time, clean it before storage.
- Discharge the Pump completely
- Flush it with water or cleaning agent.
- Disconnect all hoses.

Pump Spare Parts Storage

Neoflux recommends buyers to keep below spares in stock to make pump run efficiently. Since the extent of recommend spare parts storage depends on the period of pump usage & its different operating conditions, you should consult us or our authorized distributor.

If recommended procedures are followed (*Refer to page: 28 for storage recommendations*) and there are no extremes, the expected shelf-life is as follows:

Recommended Spares List		
Part Description	Expected Shelf Life*	Quantity.
Neo-Flex Rubber Diaphragms	3 – 4 Years	1 Set – 2 Pcs.
Neo-Tef PTFE Diaphragms	Indefinite	0 Set
Rubber Valve Balls	2 - 3 Years	1 Set – 4 Pcs.
PTFE Valve Balls	Indefinite	0 Set
Rubber Valve Seats	3 - 4 Years	1 Set – 4 Pcs.
Glyd Rings	Indefinite	1 Set – 2 Pcs.
Air Distribution System	N/A	1 Set
Rubber Gaskets & O-Rings	2 - 3 Years	1-Set
Pilot Spool Assembly	Indefinite	1-Set
Outer Pistons	Indefinite	1-Set

Neo-Flex
DIAPHRAGM TECHNOLOGY

Neo-Tef
DIAPHRAGM TECHNOLOGY



* The shelf life of any rubber article such as a diaphragm is dependent upon many factors relating to the storage conditions. If recommended procedures are followed and there are no extremes, the expected shelf life can be obtained:

Liability when using non-genuine spare parts:

The installation and/or use of non-genuine spare parts or accessories can have a negative effect on design features of the air operated diaphragm pump and thus adversely affect its operation. For damage caused by the use of non genuine spare parts and accessories on pump, system or product all liability and warranty is excluded.

nfp 25 – 1" The Plastic Pump

Diaphragms & Other Elastomers Storage Recommendations

The physical properties and the performance of rubber diaphragms & articles can deteriorate during long periods of storage. This can lead to the rubber component becoming unsuitable for service due to excessive hardening, softening, cracking, crazing or other surface degradation. These changes may be the result of one factor or a combination of factors. *For example*, the effects of oxygen, ozone, light, heat and humidity.

Recommendations:

Temperature:

In order to avoid certain forms of deterioration that may occur at higher temperatures, storage temperatures of diaphragms should be below 77°F (25°C). The effects of low temperatures are not permanently damaging, but articles may stiffen more than usual. Thus, care should be taken to avoid distortion.

Humidity:

Store Diaphragms, Valve Balls, Valve Seats & O-rings in a dry environment to avoid condensation.

Light:

Vulcanized / bonded / meshed Diaphragms & Valve Balls should be protected from light, especially direct sunlight and strong artificial light with a high ultraviolet content. Unless the diaphragms are packed in opaque containers, it is advisable to cover windows of storage rooms with an orange screen.

Oxygen & Ozone:

Whenever possible, diaphragms should be protected from circulating air by wrapping or storing in airtight containers. Ozone is very abrasive toward rubber. Consequently, storage rooms should not contain any equipment capable of generating ozone such as mercury lamps, electric motors and any other equipment that produces electrical sparks or discharge.

Deformation:

Whenever possible, diaphragms should be stored in a relaxed condition free from tension, compression or other deformation.

Contact with Liquid or Semi-Solid Materials:

Rubber Parts should not come in contact with liquids or semisolid materials, especially solvents, oils and greases at any time during storage.

Contact with Metals:

Certain metals, especially copper, manganese and iron, are known to have a damaging effect on rubber. Protection should be given by wrapping or separating with paper or polythene or using Spares Packed diaphragms.

Rotation of Stocks:

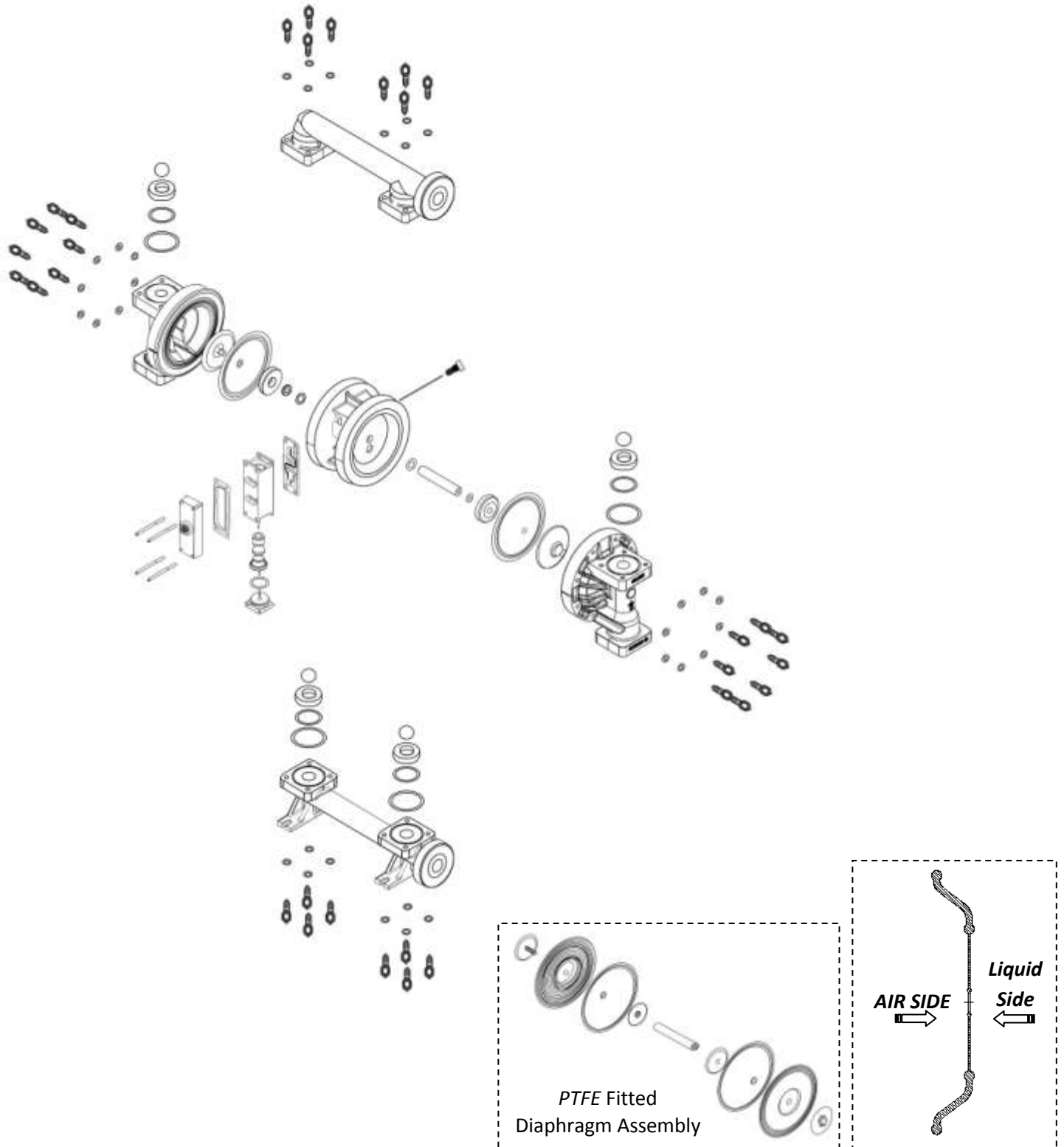
Vulcanized or cured rubber should remain in stores for as short of a period as possible (Refer to Shelf Life table on page: 27). Therefore, articles should be issued from stores in strict rotation with a date *First-in / First-Out Method*.

Cleaning:

Care must be taken in cleaning vulcanized rubber. Wash with mild soap and water, and avoid using organic solvents such as trichloroethylene, carbon tetrachloride, or petroleum.

nfp 25 – 1" The Plastic Pump

Exploded View *Rubber & PTFE – Fitted Diaphragm*



nfp 25 – 1" The Plastic Pump

nfp 25 Parts Listing

No.	Description	Qty.	nfp 25 P/N
1	Neo-Flo Air Valve Assembly	1	25-0004-00
2	End Cap	1	25-0004-01
3	End Cap O-ring	1	25-0006-10
4	Air Valve Gasket	1	25-0006-11
5	Muffler Plate Gasket	1	25-0006-12
6	Muffler Plate	1	25-0004-04
7	Fastener – Air Assembly	4	25-0008-01
8	Neo-Muff Silencer	1	25-0004-05
9	Center Section	1	25-0003-01
10	Air-Inlet Bushing	1	25-0003-08
11	Pilot Sleeve Assembly	1	25-0003-02
12	Guide Ring	2	25-0006-03
13	Retaining Ring (Cerclip)	2	25-0003-03
14 (a)	Shaft – Neo-Flo (Rubber Fitted)	1	25-0003-04-1
14 (b)	Shaft – Neo-Flo (PTFE Fitted)	1	25-0003-04
15	Disc Spring Washer (Belleville)	2	25-0003-05
16	Inner Piston	2	25-0003-06
17	Outer Piston	2	25-0003-07
18	Liquid Chamber	2	25-002-01
19	Inlet / Suction Manifold	1	25-001-01
20	Outlet / Discharge Manifold	1	25-001-02
21	Valve Seat	4	Refer to elastomeric chart
22	Valve Ball	4	Refer to elastomeric chart
23	Flange O-ring	4	25-0006-01
24	Fastener - Manifolds	16	25-0008-03
25	Fastener – Liquid Chambers	16	25-0008-02
26	Diaphragm	2	Refer to elastomeric chart

All Boldface Items are primary wear parts.

Consult Factory for DIN Flange

nfp 25 – 1" The Plastic Pump

nfp 25 Elastomeric Options

Material	Diaphragm P/N	Valve Ball P/N	Valve Seat P/N
Neoprene	25-0007-01	25-0005-02-1	25-0005-01-1
Viton	25-0007-02	25-0005-02-2	25-0005-01-2
Buna-N	25-0007-05	25-0005-02-3	25-0005-01-3
Polyurethane	25-0007-03	N/A	N/A
PTFE	25-0007-09	25-0005-02-5	25-0005-01-5
Polypropylene	N/A	N/A	25-0005-01-4
Stainless Steel	N/A	N/A	25-0005-01-7

NOTE: Not all materials are available for all models. Please contact *Neoflux* for material options for your pump.

Temperature Limitations

Material	° Centigrade	° Fahrenheit
Neoprene	-18°C to 93°C	0°F to 200°F
Viton®	-38°C to 165°C	-40°F to 340°F
Buna-N®	-12°C to 80°C	10°F to 178°F
Polyurethane	-11°C to 60°C	10°F to 144°F
PTFE®	4°C to 105°C	39°F to 219°F
Polypropylene	0°C to 75°C	32°F to 175°F
PVDF	-12°C to 107°C	10°F to 225°F



CAUTION: Maximum temperature limits are based upon mechanical stress only. Certain chemicals will significantly reduce maximum safe operating temperatures. Consult *Neoflux* Chemical Resistance Guide for chemical compatibility and temperature limits or contact us for more details.

nfp 25 – 1" The Plastic Pump



WARRANTY

Each and every product manufactured by *Neoflux* is built to meet the highest standards of quality. Every pump is functionally tested to insure integrity of operation.

Neoflux warrants that pumps, accessories and parts manufactured or supplied by it to be free from defects in material and workmanship for a period of 12 months (1) years from date of installation or 18 months (1.5) years from date of purchase, whichever comes first. Failure due to normal wear, misapplication, or abuse is, of course, excluded from this warranty.

Since the use of *Neoflux* pumps and parts is beyond our control, we cannot guarantee the suitability of any pump or part for a particular application and *Neoflux* shall not be liable for any consequential damage or expense arising from the use or misuse of its products on any application. Responsibility is limited solely to replacement or repair of defective *Neoflux* pumps and parts. All decisions as to the cause of failure are the sole determination of *Neoflux*.

Prior approval must be obtained from *Neoflux* for return of any items for warranty consideration and must be accompanied by the appropriate MSDS for the product(s) involved. A Return Goods Tag, must be included with the items which must be shipped freight prepaid.

The foregoing warranty is exclusive and in lieu of all other warranties expressed or implied (whether written or oral) including all implied warranties of merchantability and fitness for any particular purpose. No distributor or other person is authorized to assume any liability or obligation for *Neoflux* other than expressly provided herein.

Neoflux Signature Design Platform

ESADS + PLUS (External Serviceable Lube-Free Air Distribution System)

Complete In-Line Serviceable

ON – OFF – ON.... RELIABILITY – GURANTEED!

DIAPHRAGM SHAFT GURANTEE

Durable Corrosion Resistance SS-304 & SS-410 Hard Chrome Grinded Diaphragm Shaft for smooth performance.

GURANTEED!

not to yield under....

- Tension
- Compression
- Bending
- Pump Operation



Neo-Flo

AIR DISTRIBUTION SYSTEM

ONLY 3 MOVING PARTS MEANS FEWER REPLACEMENTS

The Unbalanced & Non-stalling Air Valve Spool

The Pilot Spool

The Main Shaft

Advanced Air Valve Spool eliminates the problem of freezing during the cycle and conduct a lube-free operation

Superb flow rate

Inspection of all *nfp* series Air Distribution System can be done without removing the pump from service

This means Minimum Breakdown & Maximum Reliability

Unique to its design is On/Off reliability

Options of All metal as well as Plastic Air Distribution System & Center Block

Entirely Submersible

Silent Operation. With *Neo-Muff* Silencer, noise reduction is as low as 70 db



Neo-Tune

CONTROL THE FLOW

This design incorporates Air-Regulator for discharge efficiency. It really contrives the flow you want

High performance with lower operational cost

Operational flexibility & higher flow rate

Simple & easy to control the flow rate

Entirely Submersible

Neo-Sync

AUTOMATE THE FLOW

No changes to the pump's working principle

Electric as well as Pneumatic signals options available to control pump speed

Specifically for System Automation (PLC) with direct electrical interface

Superior displacement reliability means better accuracy

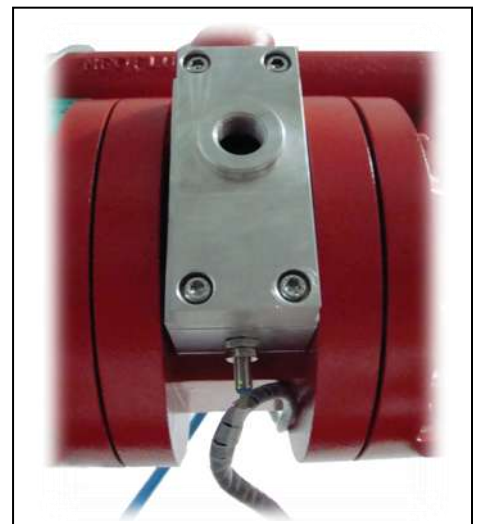
Efficient for batching & metering application

Externally controlled

Superior On / off reliability

Simple installation & easy monitoring

Explosion proof option also available



Points to consider when selecting AODD Pump

To get the AODD pump best suited to your industry application, please go through the below two steps in details.

Step: 1 – Check Temperature Limitations

- What is the Material Pumping Temperature?

When choosing the AODD Pump Material, be sure to check the temperature limits for all wetted components. Elastomers may change Temperature limits.

Example: Viton® has a maximum limit of 176.7°C (350°F) but Polypropylene has maximum limit of only 79.4°C (175°F).

Maximum temperature limits are based upon mechanical stress only. Certain chemicals will significantly reduce maximum safe operating temperature. Consult us for chemical compatibility issues.

Step: 2 – Check Chemical Properties

The first consideration when applying a Diaphragm pump to any application is to try and determine how abrasive and corrosive the product to be pumped is. Know your media's pH Level.

- What is the Pump Application? – Submersible / Transfer / Other
- Operating Method – Continuous / Intermittent
- What is the Chemical Viscosity?
- Is it Flammable?
- Is it Corrosive or Abrasive?

Corrosive liquids, by nature, directly attack the pump materials. The strength of a corrosive liquid depends on its concentration and temperature.

Abrasive liquid is one that has particles in it. Some, like inks, have very fine particles, while others, like some paints, contain much larger particles. Handling abrasive liquids is a difficult application for any pump, because the abrasive particles promote pump wear.


Typical abrasive applications include:

- Paints and Coatings
- Inks
- Filled Roofing Asphalt
- Waste Oils
- Magnetic Oxide Tape Coatings
- Titanium Dioxide Slurries


- Is it Shear Sensitive?
- Is Material having Solid Particles? If Yes, What is the size of Particles?

Pump Wetted Material Compatibility Chart

Wetted Section MOC	Numeric pH Level	Fluid Solutions
Stainless Steel Polypropylene	14 13 12 11	Alkaline Caustic
Cast Iron	10 9	Basic
Aluminum	8 7 6	Neutral
Polypropylene Stainless Steel	5 4 3 2 1 0	Acid



Increasingly Alkalinity



Increasingly Acidity

pH is a measure of hydrogen-ion concentration. pH of 7 is neutral.

Below 7, *Acid*

Above 7, *Alkaline*

Litmus indicator **solution** turns **red** in acidic solutions and **blue** in alkaline solutions - and it turns **purple** in neutral solutions.

- ❖ The closer to pH 0 you go, the more strongly acidic a solution is.
- ❖ The closer to pH 14 you go, the more strongly alkaline a solution is.



General Diaphragm Selection Guide

CAUTION: Temperature limits are based upon mechanical stress only. Certain chemicals will significantly reduce maximum safe operating temperatures. Consult engineering guides for chemical compatibility and temperature limits. It must be emphasized that none of these figures are absolute and are only general guidelines.

These guides for best diaphragm selection do not hold for the valve ball material. Because the diaphragms are securely gripped by their inner and outer beads, they can stand up to 20% swell without affecting pump performance. If the valve balls swell even a very small amount, they cannot function properly. Therefore, there will be cases where neoprene diaphragms will be the best selection but PTFE, Buna-N, EPDM or polyurethane balls will be required.

Compound: Neoprene

Color: Black

Temperature Limits: -18°C to 93°C (0°F to $+200^{\circ}\text{F}$)

Estimated Life: 10 Million Cycles

Suitable Applications:

An excellent general purpose diaphragm for use in non-aggressive applications such as Water-based Slurries, Well Water or Sea Water. Exhibits excellent flex life and low cost.

Compound: Buna-N

Color: Black with Red Dot

Temperature Limits: -12°C to 82°C ($+10^{\circ}\text{F}$ to $+180^{\circ}\text{F}$)

Estimated Life: 10 Million Cycles

Suitable Applications:

Excellent for applications involving petroleum/oil based fluids such as Leaded Gasoline, Fuel Oils, Non-Synthetic Hydraulic Oils, Kerosene, Turpentine's and Motor Oils. *Neoflux's* least expensive diaphragm.

Compound: Polyurethane

Color: Clear

Temperature Limits: -12°C to 66°C (0°F to $+150^{\circ}\text{F}$)

Suitable Applications:

An excellent general purpose diaphragm for use in Non-Aggressive applications. This material exhibits exceptional flex life and durability.

Compound: PTFE

Estimated Life: 20 Million Cycles

Color: White

Temperature Limits: -4°C to 104°C ($+40^{\circ}\text{F}$ to $+220^{\circ}\text{F}$)

Also, when using a *PTFE* diaphragm, flow rates will be reduced by up to 25%. This is due to the inability of *PTFE* to flex as far as a rubber diaphragm which will decrease displacement per stroke.

Suitable Applications:

Excellent choice when pumping Highly Aggressive fluids such as Aromatic or Chlorinated Hydrocarbons, Acids, Caustics, Ketones and Acetates. Exhibits good flex life compared to a standard rubber diaphragm.

Declaration of Conformity

The Neoflux product listed conforms to the standards & directives describe below.
Neoflux Representative (Responsible Person): *ATIT SHAH* Position: *V.P. of Engineering*

Manufactured By: *Neoflux Technic Private Limited*
Fabrique Par: 43 GIDC Industrial Estate,
Fabricada Por: Phase – I,
Hergestellt Von: Vatva,
Fabbricato Da: AHMEDABAD – 382445,
Fabrikant: GUJARAT,
Valmistaja: INDIA
Produsent: Tel.: +91 – 79 – 25830602
Fabricante: : +91 – 79 – 25831185
Fax: +91 – 79 – 25835298
Email – info@neoflux.in



Pump Model Number:

Pump Serial Number:

Modele, Type:
Modelo, Tipo:
Modell, Type:
Modello Tipo:
Malli, Tyyppi:

Description:	Air Distribution System – Diaphragm MOC – NRV MOC – Pump Housing MOC– Un-Filled UV Polypropylene Temperature Limitations – Refer to Page # 31 Special Remarks – UV Stabilized Housing
---------------------	--

Authorized / Approved By:

Approuve par:
Aprobado por:
Genehmigt von:
Approvato da:
Goedgekeurd door:
Autorizado Por:

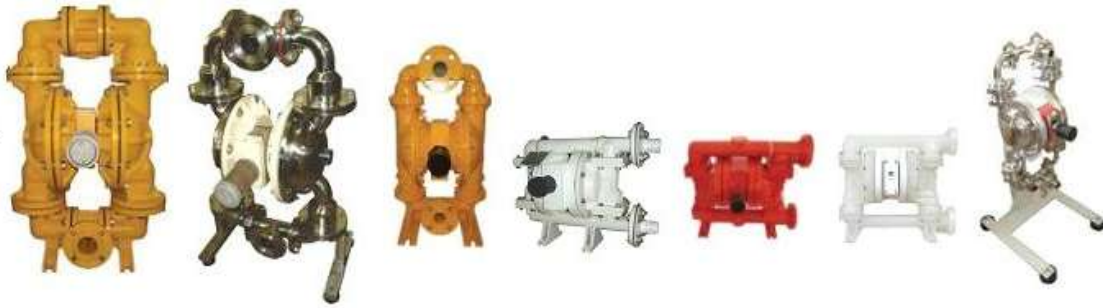
ATIT SHAH,
V.P. of Engineering

Date of Manufacture:

Fecha:
Datum:
Data:
Dato:

Address

43 GIDC Industrial Estate,
Phase – 1, Vatva,
Ahmedabad – 382445,
Gujarat,
INDIA
email – info@neoflux.in
www.neoflux.in



Contacts:

Atit Shah +91-9825009234/ atitshah@neoplastindia.com
(Director)

Ankit Shah +91-9825007220 / ankitshah@neoplastindia.com
(Director)

neoflux™

Technic Pvt. Ltd.

